

KCC
GROUP

Residential
L I V I N G
Range



The simplicity of the **LIVING** range from KCC

The **LIVING** range from KCC combines four stylish lever options, particularly suited to residential developments, with a simple and foolproof ordering and supply method. It's so simple you might wonder why it hasn't been done before.

We can provide these in a traditional 'bulk pack' method or as a pre-packed set at no additional cost.

All you have to do is choose which lever style you want and which function you need, LATCH, LOCK or BATHROOM. What you get is all the items you need for that door - **all in one set**. Simply order multiple sets for your project.

A typical 2 bed apartment might require

- 1 x Lock set
- 1 x Bathroom set
- 4 x Latch sets

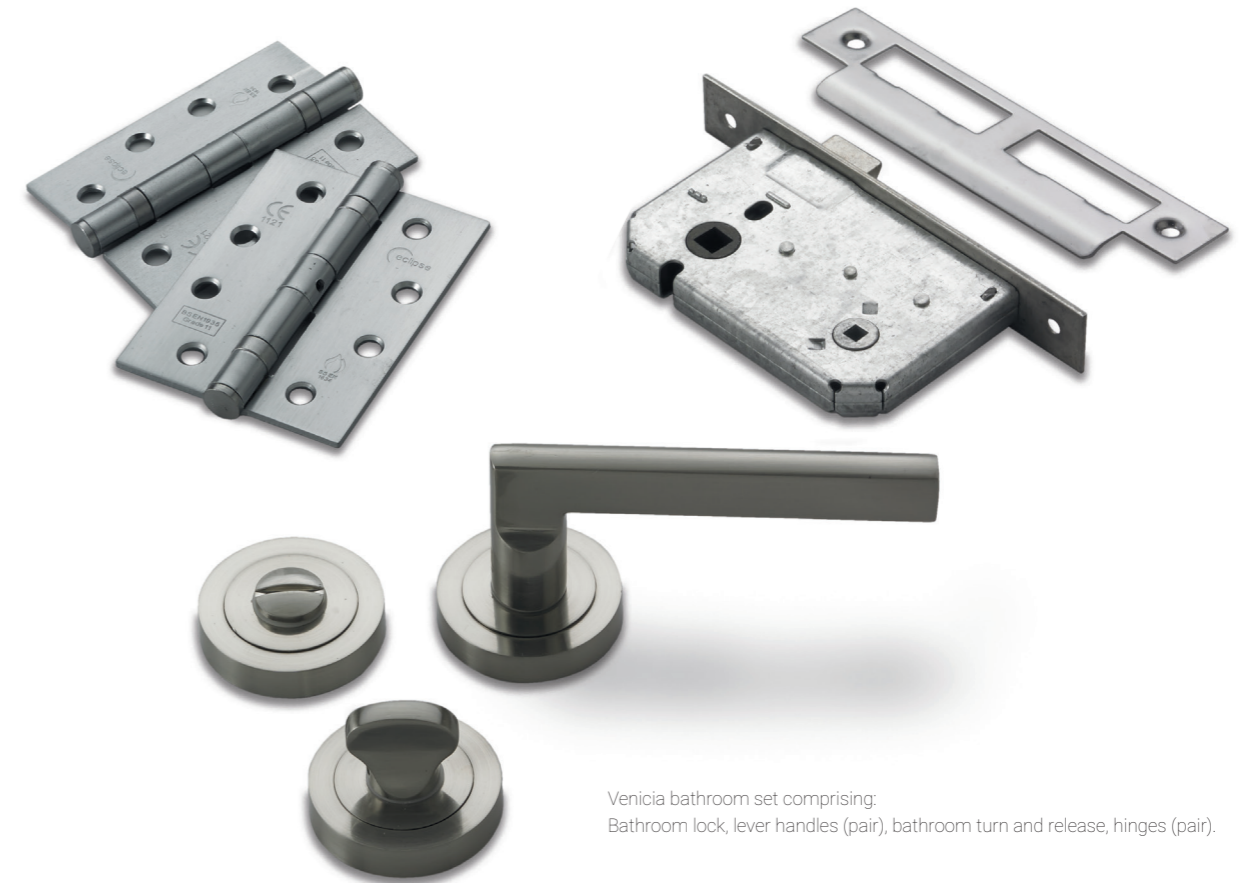
What's in each set?



	Levers	Escutcheons	Turn Indicator	Latch	3 Lever Sash-lock	Bathroom	Hinges (pair)
Latch set	♦			♦			♦
Lock set	♦	♦			♦		♦
Bathroom set	♦		♦			♦	♦

All levers and escutcheons are supplied as a pair with fixings and spindle where appropriate

Crafted with precision and backed up by rigorous **certification**.



Venicia bathroom set comprising:
Bathroom lock, lever handles (pair), bathroom turn and release, hinges (pair).

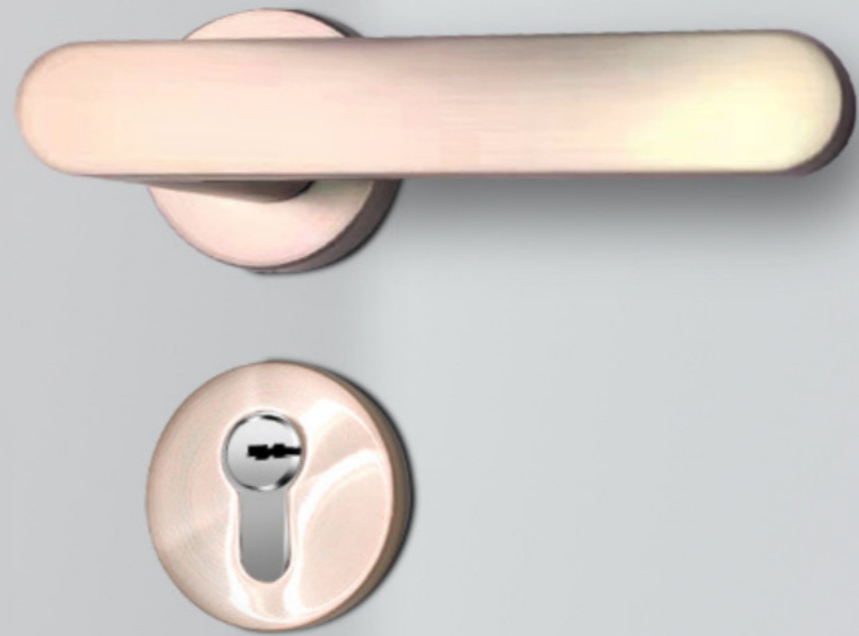
Venicia



Firenze



page 6

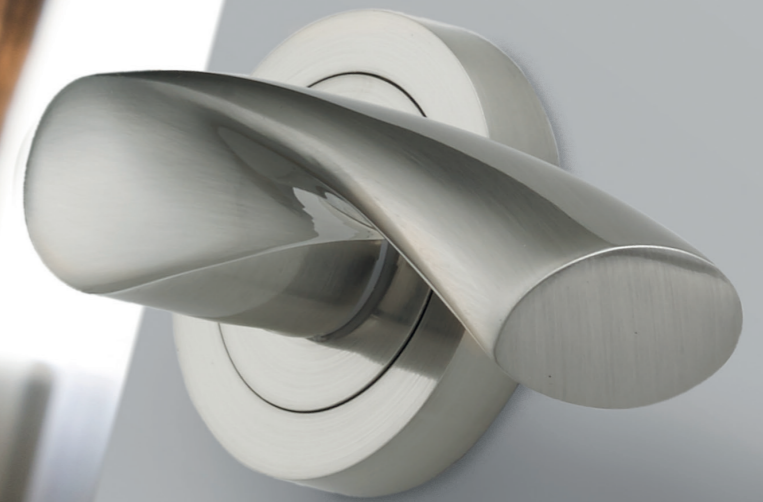


Monza



page 7

Verona



Siena



Milano

Palermo



Livorno

Lock and Latch Functions



Sashlock

- 3 lever sashlock
- 57mm centres
- 57mm backset (76mm case)
- 47mm backset (65mm case)
- Reversible latch
- Brushed satin forend
- Adjustable keep/strike
- Available with radiused or square ended forend and matching strike

Bathroom lock

- 57mm centres
- 57mm backset (76mm case)
- 47mm backset (65mm case)
- Reversible latch
- Stainless steel forend
- 5mm turn follower
- Adjustable keep/strike
- Available with radiused or square ended forend and matching strike

Tubular latch

- 57mm backset
- Reversible latch
- Single piece forend
- Brushed satin finish

Hinges



- Hinges suitable for doors up to 80 kg
- BS EN 1935 grade 11
- Available with radiused or square corners
- Supplied as a pair complete with stainless steel fixing screws
- Satin stainless steel finish



- Escutcheons for 3 lever locks
- Face fixed with screws provided
- Threaded covers conceal fixings
- Compatible with all lever styles
- Brushed finish to match lever roses



- Bathroom thumbturn and emergency release
- Face fixed with screws provided
- Threaded covers conceal fixings
- Compatible with all lever styles
- Brushed finish to match lever roses
- Supplied with 5mm bathroom spindle



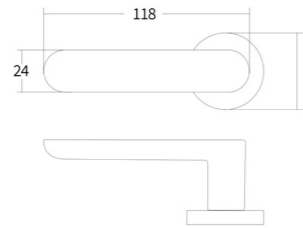
Milano Lever

- Gently arched tubular design
- Sprung rose assembly
- Threaded rose cover
- Brushed satin finish
- C/W back to back fixings and woodscrews



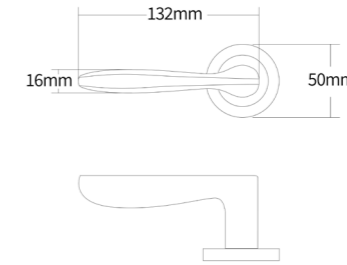
Verona Lever

- Sweeping wing design
- Sprung rose assembly
- Threaded rose cover
- Brushed satin finish
- C/W back to back fixings and woodscrews



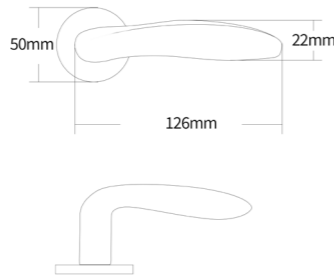
Monza Lever

- Flat tubular design
- Sprung rose assembly
- Threaded rose cover
- Brushed satin finish
- C/W back to back fixings and woodscrews



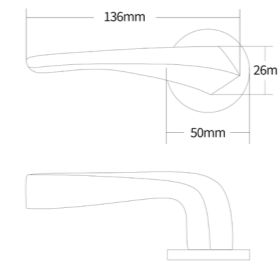
Palermo Lever

- Sleek minimal design
- Sprung rose assembly
- Threaded rose cover
- Brushed satin finish
- C/W back to back fixings and woodscrews



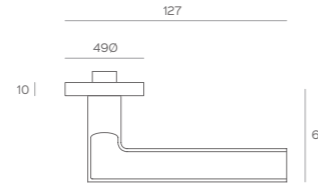
Livorno Lever

- Curved dual finish design
- Sprung rose assembly
- Threaded rose cover
- Dual satin and polished finish
- C/W back to back fixings and woodscrews



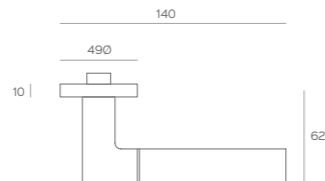
Firenze Lever

- Sharp edged design
- Sprung rose assembly
- Threaded rose cover
- Painted and steel finish
- C/W back to back fixings and woodscrews



Venicia Lever

- Flat tubular design
- Sprung rose assembly
- Threaded rose cover
- Brushed satin finish
- C/W back to back fixings and woodscrews



Siena Lever

- Curved dual finish design
- Sprung rose assembly
- Threaded rose cover
- Dual satin and polished finish
- C/W back to back fixings and woodscrews

KCC
GROUP

Dublin | Cork | Belfast

E. solutions@thekccgroup.com

W. thekccgroup.com