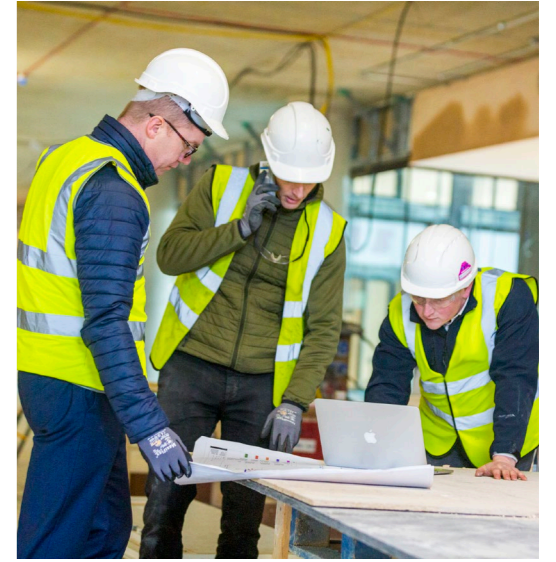


The KCC Group guide to:

Simplifying Specification

9 easy-to-follow steps to
guarantee hassle-free project
specification and scheduling.





Opening the doors to specifying outstanding buildings

During the specification and construction process multiple plans and documents for each product proposed are typically submitted to the client and planners for review. From a specifier's perspective, this process is time consuming and tedious, so to help architects and contractors in their quest to specify and deliver outstanding buildings, KCC Group have streamlined the process of creating construction documents, making it more efficient, accurate, and straightforward.

As a direct response to the shifting landscape of specification and a lack of integrated information that has plagued the industry for years, KCC Group have developed a unique specification and project scheduling solution that delivers **clear, easy to follow, fully compliant 'Design submittals', 'Project set submittals' and 'Technical submittals'**, all from one single-source.

Known as KCC 360, it is a highly detailed, time-saving, and hassle free service that takes away stress, reduces client approval time and decreases your risk by giving you all the detail, plans, drawings, specifications, warranties, and certifications for every door, automation, access, hardware, riser door or wall system on your project.

A common feature of the design process is the need to review and approve plans prior to construction and a common challenge with this is that it can be difficult to get a clear picture of what is being specified in any given area, or to pick out specific areas of interest.

To combat this, our experts start by colour coding each element of your floor plans, highlighting the door, hardware and glazing areas and identifying the key parts of the access and automatics strategy to empower you with a clear picture of your project.

This provides our specifier clients with an easy to interpret visualisation of where the key elements of the project are located and helps them to determine if the plans need to be adjusted.

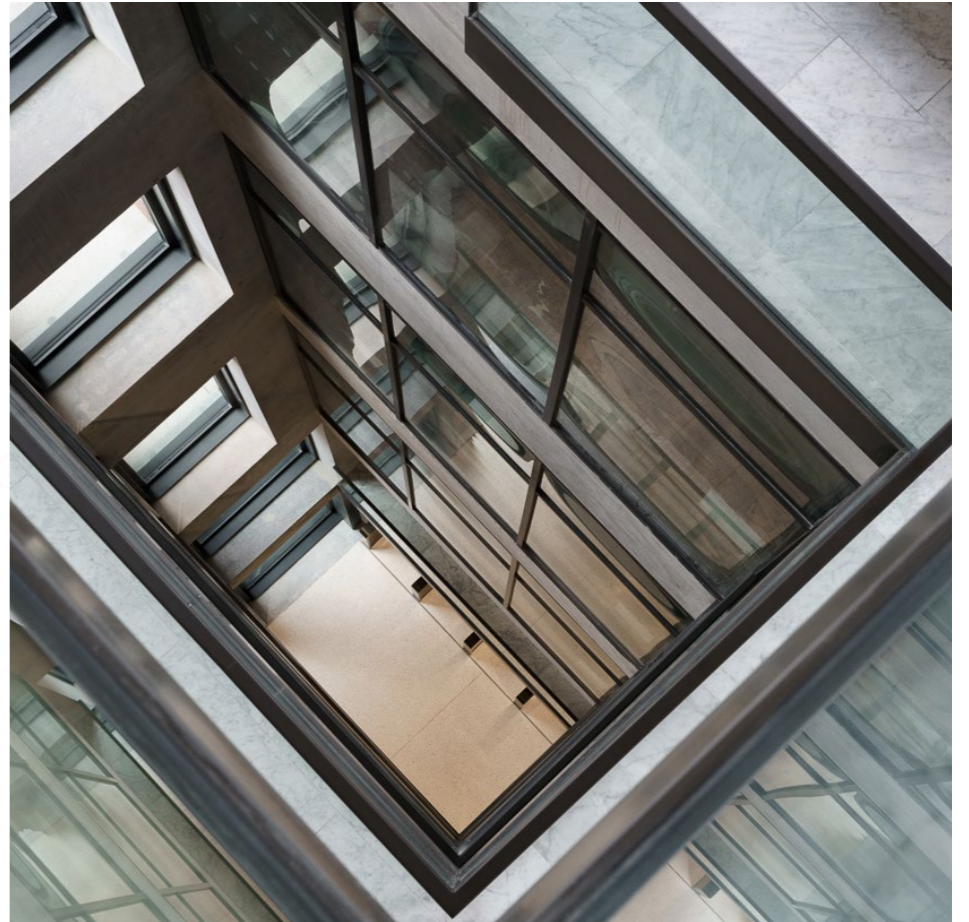
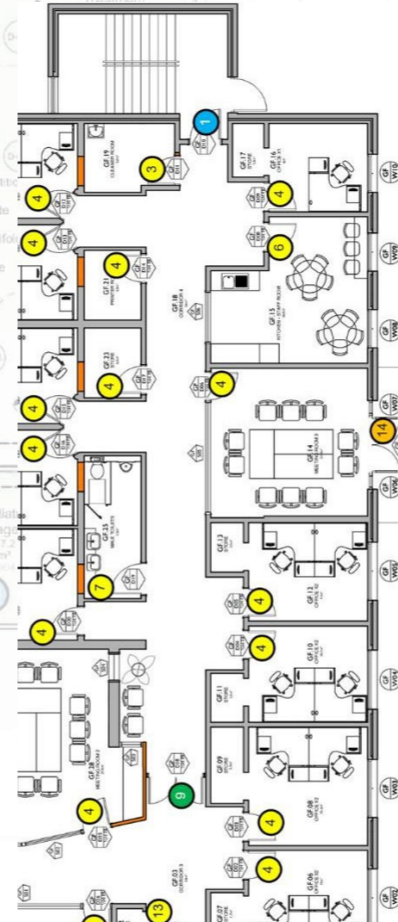
Following this, we produce a comprehensive breakdown of all the elements that make up your project. We do this by mapping out the individual components to produce a 'Project Set Submittal' and include the relevant colour coded keys from your floor plans, so that you can easily relate each element back to its location in the overall plan.


It is standard practice in the construction industry to produce multiple detailed documents for individual products. These are often sent to the client for review, along with a proposal, and this can take several iterations before the final document is agreed.

At KCC we felt there was a better way of handling project specifications, so to save architects the time and hassle of multiple reviews and chasing of the client, we have developed a revolutionary 9 step, easy-to-follow process that is efficient, accurate and straightforward.

Collating all the information into one single book, we bring together datasheets, specification text, certifications and warranties, for every component, every element, every set of your project.

As the old adage goes, "the difference between something good and something great is attention to detail", that's why we provide all the technical information in one place, for one review and approval, taking care of the detail, so you don't have to.



 **Reduce your risk, speed up client approval time and get all the information you need for one review and one approval by following our 9 steps to hassle-free project specification and scheduling.**

A 9 step guide to hassle-free specification

Follow these 9 steps to receive your comprehensive pack with all the technical detail, plans, drawings, specifications, warranties, and certifications for every door, automation, access, hardware, and wall system on your project. We take care of the detail, so you don't have to.

1 Send us through your project information

Typically, project floorplans, elevations, door schedule & M&E floorplans are sent through to the KCC team from the architect or designer as part of the project specification process.

2 KCC specification experts review all documentation received

Our specification experts will review and analyse the floorplans and project information, mentally walking through the building like the user would to understand and design an appropriate access strategy and to see where we can assist or offer a solution relating to the automation, access, fire compartmentation, spatial design, hardware or ventilation requirements of the building.

3 Specific client requests are acknowledged

Once reviewed, our team also acknowledge any specific requests from the client and provide any required NBS specifications or specification text before progressing the project through the KCC 360 process.

4 Project-specific KCC 360 profile is created

The project is then created in 360 with a specific ID for ease of amends or reference down the line. The floorplans for each level of the building are uploaded to 360 individually as part of the collective project file.

5 The specific requirements of each individual space are carefully reviewed

Our specification experts have extensive experience in reviewing project drawings and floorplans and use their knowledge of different building types and their intended users to give consideration to specific functional or access requirements for each individual room in accordance to building regulations – for example, restricted access to a drug storage area in a hospital.

6 The most appropriate solutions are selected and presented in a colour-coded floorplan

KCC Group have spent years collating and gathering all of our product data into a vast library and our specification experts draw from this extensive range of pre-built KCC “sets” (eg. timber, steel or glazed doorset with pre-determined group of products specially selected for specific door types and includes all necessary ironmongery, access control, automation and door specification if required) to identify the most appropriate solution for each opening in the building. This library of pre-existing sets can be filtered according to door type, material, size, fire resistance requirements, hardware requirements etc to select the optimal set for each. We then allocate appropriate sets to each opening within the building.

7 We'll develop four submittal documents with all the information you need to create detailed strategies for your building

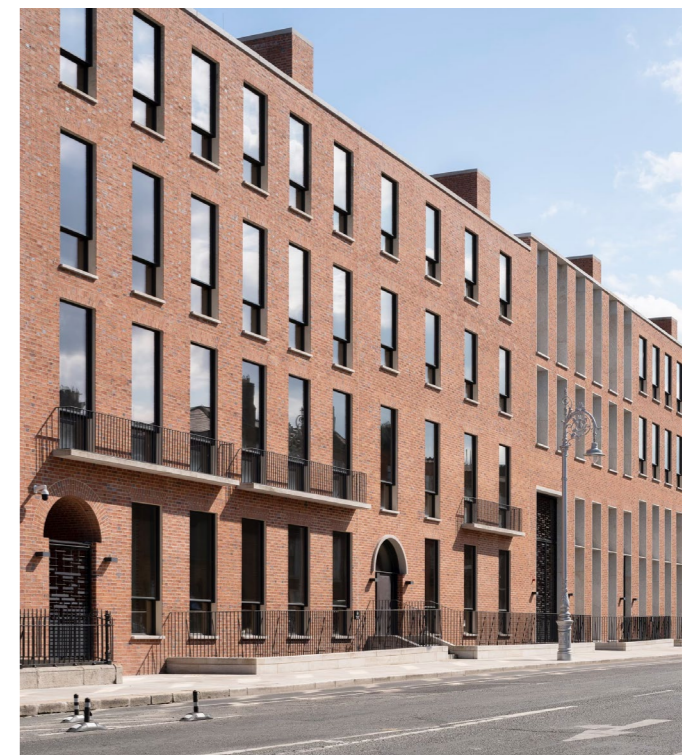
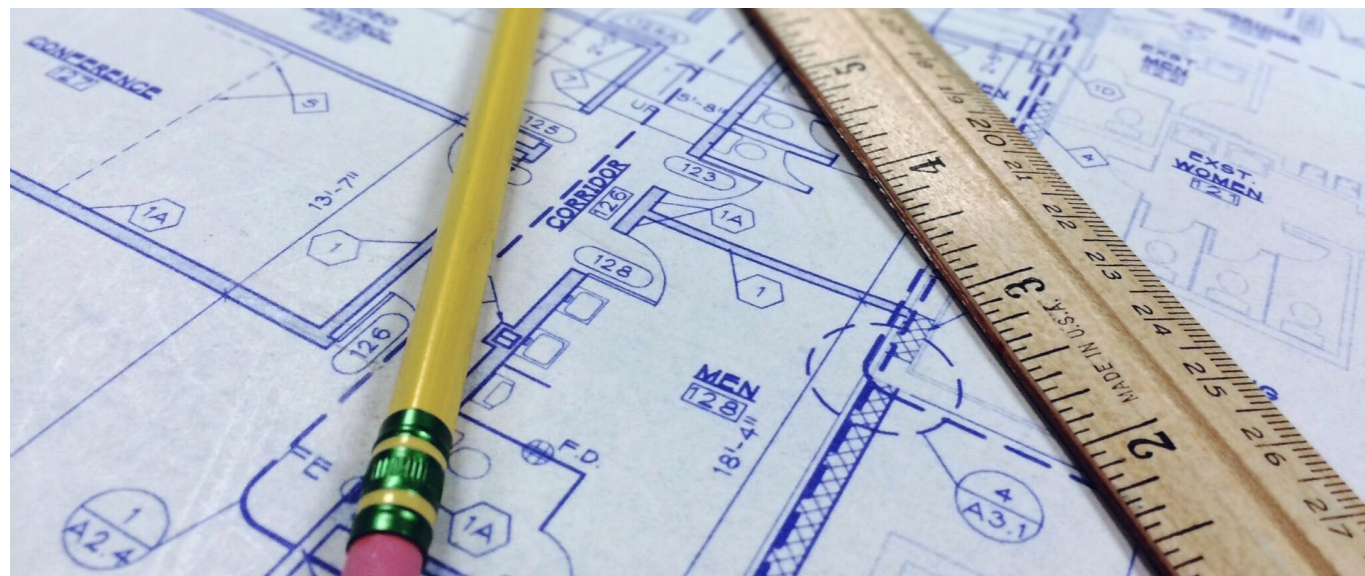
Our specification and scheduling experts produce four clear, easy to follow submittals to give you back all the information you need to create detailed strategies for your building. First, they'll map out all the elements and components that make up your project in the Project Sets Submittal. Then they'll create detailed isometric drawings showing exact set functionality in the Design Submittal, as well as detailed wiring schematics showing you the cable layout and specification for doors controlled by electronic devices in your building in the Commissioning Submittal. And finally, they'll put together the Technical Submittal, including datasheets, specification text, certifications and warranties, for every component, every element, every set, of your project.

8 An extended 'Technical submittal' is produced

Our specification experts carefully work their way through each floor of the building, allocating sets to each opening. Upon completion they are able to produce a full technical submittal with all product information, specification text, warranties, fire certification, test evidence and declarations of performance for every door in your building.

9 You are supplied with a complete set of comprehensive documents to support compliant specification

This comprehensive full project specification then goes back to the client for review and includes a project sets submittal, a design submittal, a commissioning submittal, an extended technical submittal and a colour-coded floorplan linking everything together for ease of reference and approval. This provides a crystal clear, easy to interpret visualisation of where the key elements of the project are located, and allows for you to easily distinguish between them. You're empowered with a clear picture of your project, accelerating project reviews and helping to determine if the plans need to be adjusted.



What is KCC 360?

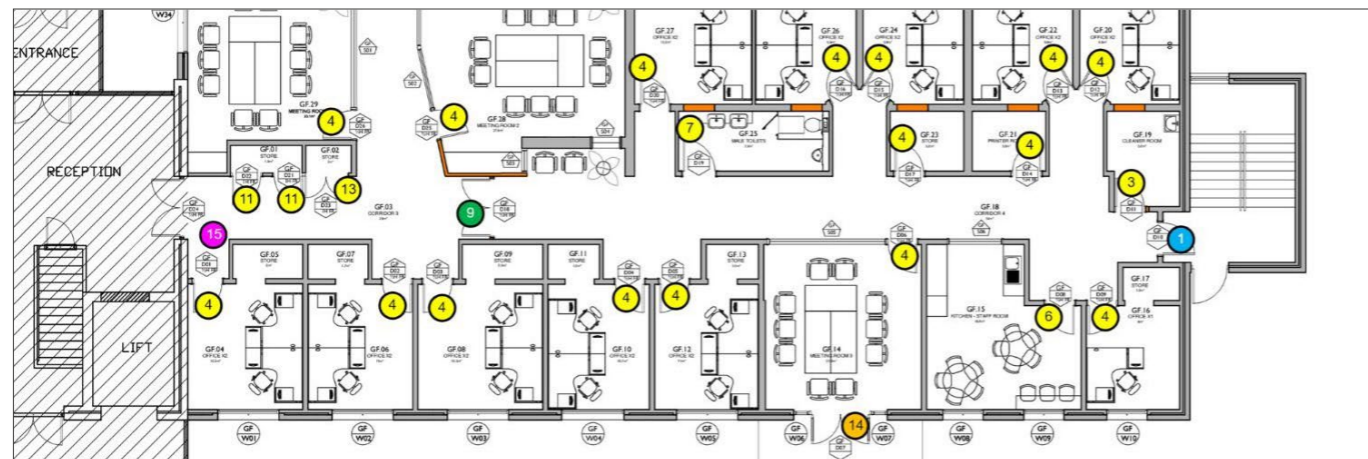
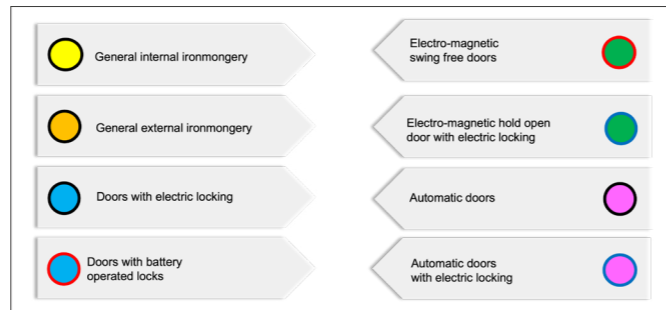
At KCC, we focus on the detail. Nothing missed, everything carefully considered. We've built this way of working into building an intelligent, highly-detailed, project specification and project scheduling solution called KCC 360. When you avail of this service, we provide you with a comprehensive project pack which includes colour coded floor plans and four submittal documents with all the detail, plans, drawings, specifications, warranties, and certifications for every element and component of your project.

Mastering the detail with KCC 360

Reduce design time, speed up your projects, and reduce your risk. We take your project floorplans and we give you back all the information you need to create detailed strategies for your building. One project pack with all the detail - allowing users to determine if the functions of that set match the exact requirements for that location in the building, reducing review time and ensuring all functionality is carefully considered.

Your KCC 360 project pack includes:

Colour Coded Floor Plans: You will receive colour-coded floorplans identifying the key parts of the access strategy. This provides a crystal clear, easy to interpret visualisation of where the key elements of the project are located, and allows for you to easily distinguish between them. You're empowered with a clear picture of your project, speeding project reviews and helping to determine if the plans need to be adjusted.



KCC GROUP
BIM / BICAR 360
BIM / BICAR 360 Project Sets Submittal

Category	Item	Description	Unit	Qty
1

KCC GROUP
BIM / BICAR 360
Set Index Key & Allocated Doors

Color	Category	Item	Description
Yellow

KCC GROUP
Sets and Components

SET KC000A.3

Category No.	Description	Unit	Qty
...

KCC GROUP
Sets and Components

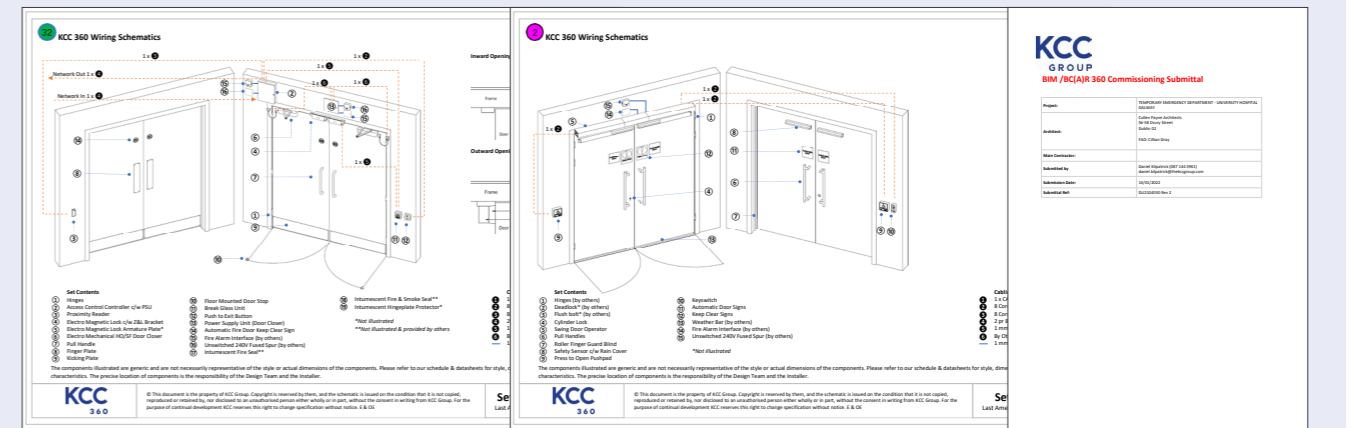
SET KC000A.4

Category No.	Description	Unit	Qty
...

Project Sets Submittal: We map out all the elements and components that make up your project in the Project Sets Submittal. All sets and components include the relevant colour coded key from the floor plans, so that you can easily relate each element back to its location in the overall plan.

Design & Commissioning submittals: Our experts create detailed isometric drawings for each set, clearly showing the specific functionality of every element. They'll also create detailed wiring schematics showing the cable layout and specification for doors controlled by electronic devices in your building. Each drawing is also mapped back to its colour coded key from the

floor plan, highlighting the planned location of the element in the building. Together, the colour coded drawing and the functionality overview allows you to determine if the functions of that set match the exact requirements for that location in the building, speeding reviews and ensuring all functionality is carefully considered.



Technical Submittal: All the detail you need, put together by KCC. Datasheets, specification text, certifications and warranties, for every component, every element, every set, of your project. Nothing missed. All the technical information ready first time, for one review and approval. No need for multiple reviews and no need to chase the detail. We provide everything. Revit models are also available on request.





**Interested in KCC 360
for your next project?**

Dublin | Cork | Belfast | Dubai

E. solutions@thekccgroup.com

W. thekccgroup.com