

**Description**

Parthos Movable Wall System, EI60 Fire Rated, Acoustic Insulation of 45 - 58 dB Rw. Concealed Vertical Seal



**Product Summary**

A durable movable wall system, fire rated EI60 and with high acoustic properties. Easy to operate and where the design can be tailored seamlessly to your project. Suitable for small offices to huge conference halls and everything in-between.

**Certification**

European Norm	No Harmonised European Norm
Product Classification	n/a (No Harmonised European Norm)
EC Certificate of Conformity No.	n/a (No Harmonised European Norm)
Certifire No.	n/a
Declaration of Performance	n/a (No Harmonised European Norm)
Other Test Evidence	n/a

**BIM Assist™**

**BC(A)R Assist™\***

**Guarantee**

**2 Years**

Last Reviewed

16/08/2019

\* ROI Only

*For the purpose of continual product development, KCC reserves the right to change specifications without notice. Please accept all dimensions as approximate. E&OE. © KCC Group 2022.*

**Description**

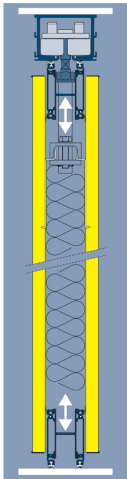
Parthos Movable Wall System, EI60 Fire Rated, Acoustic Insulation of 45 - 58 dB Rw. Concealed Vertical Seal

**Features**

- Versatile and durable moveable wall system designed to eliminate the need for floor guides
- EI60 fire rated, EI30 option
- Excellent acoustic properties of up to 45 to 58 dB Rw
- Concealed vertical & fire seals for improved aesthetics
- Extensive design options that include curved walls and tracks, and walls that can contain single or double doors and/or glass panels
- Available in a broad range of finishes and panel inlay options
- Strong metal self supporting frame provides heights of up to 3.45 metres
- Pressure seals to the ceiling and floor can be deployed manually via a crank handle or electrically providing semi automatic deployment
- Multiple stacking possibilities

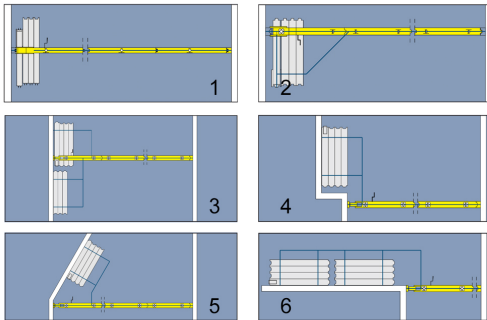
**Technical Characteristics**

- Panel Thickness: 110mm (120mm for 58dB)
- Panel Height: 1.5-3.45m
- Panel Width: 600-1,240mm
- Frame Construction: Aluminium and steel
- Board Material: 19-22mm, fire retardant class 1, carried by the frame construction
- Walls and Ceiling Tracks: Heavy duty, curved or straight
- Floor Track: Not required
- Carrier: Ball bearing trolleys
- Fire Safety: Fire rated EI60, also see system 110SI EI30
- Vertical Profiles: Anodised aluminium with magnetic strips, concealed seal and concealed fire protection strips
- Pressure Sleeves: Aluminium construction, Black EPDM rubber with double sealing profiles
- Operation of Pressure Sleeves: Manual or semi-electrically powered
- Doors: Single in panel
- Sound Insulation: 45, 47, 50, 53, 57, 58 dB Rw
- Weight: 45-85kg/m<sup>2</sup> (approximate and variable against sound insulation value)



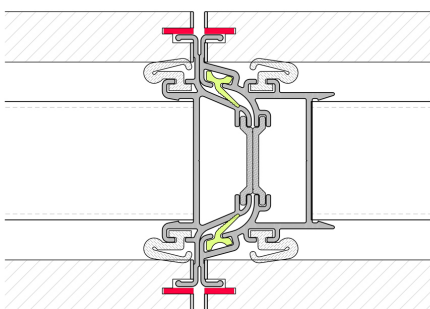
**Sectional View**

- The smooth running ball bearing track system is typically concealed in the ceiling
- The image shows the pressure sleeves at the ceiling and at the floor. Once the wall is deployed and in position, these sleeves are activated manually or electrically (semi automatic option)



**Popular Parking Options**

- ① One point suspension
- ② One point suspension with forced guidance
- ③ ④ ⑤ ⑥ Two point suspension with cross guidance



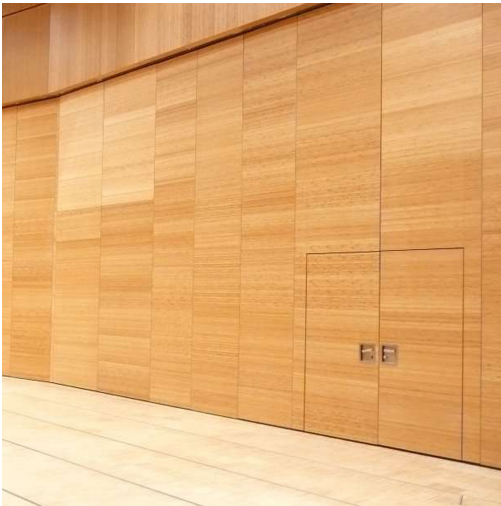
**Vertical Seal Options**

- The Palace 110S system has a visible vertical seal. This seal is concealed in the Palace 110SI system



**Design Examples**

- Palace 110



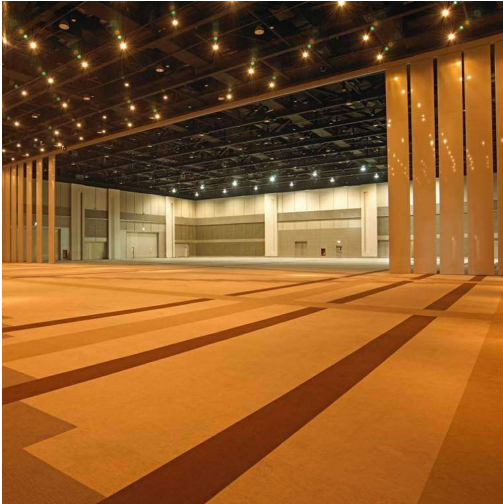
**Design Examples**

- Palace 110



**Design Examples**

- Palace 110



**Design Examples**

- Palace 110

**Description**

Parthos Movable Wall System, EI60 Fire Rated, Acoustic Insulation of 45 - 58 dB Rw. Concealed Vertical Seal

**Specification Text****MOVEABLE WALL SPECIFICATION**

- Manufacturer: KCC Group / Parthos
- Product reference: KW-PALACE 110SI/EI60
- Type: Parthos movable wall system
- Fire: Fire Rated EI60
- Panel Thickness: 110mm
- Panel Height: 1.5-3.45m
- Panel Width: 600-1,240mm
- Frame Construction: Aluminium and steel
- Board Material: 19-22mm [SPECIFY], fire retardant class 1, carried by the frame construction
- Walls and Ceiling Tracks: Heavy duty, curved and straight
- Floor Track: Not required
- Carrier: Ball bearing trolleys
- Vertical Profiles: Anodised aluminium with magnetic strips concealed seal
- Pressure Sleeves: Aluminium construction, Black EPDM rubber with double sealing profiles
- Operation of Pressure Sleeves: Manual or semi-electrically powered [SPECIFY]
- Doors: Single in panel
- Sound Insulation: 45, 47, 50, 53, 57, 58\* dB Rw [SPECIFY]
- Finish: [SPECIFY]

\*58dB version has panel thickness of 120mm