

**Description**

Parthos Movable Wall System, Non Fire Rated, Acoustic Insulation of 37 - 58 dB Rw. Visible Vertical Seal



**Product Summary**

A durable movable wall system, non fire rated and with high acoustic properties. Easy to operate and where the design can be tailored seamlessly to your project. Suitable for small offices to huge conference halls and everything in-between.

**Certification**

European Norm	No Harmonised European Norm
Product Classification	n/a (No Harmonised European Norm)
EC Certificate of Conformity No.	n/a (No Harmonised European Norm)
Certifire No.	n/a
Declaration of Performance	n/a (No Harmonised European Norm)
Other Test Evidence	n/a

**BIM Assist™**

**BC(A)R Assist™\***

**Guarantee**

**2 Years**

Last Reviewed

16/08/2019

\* ROI Only

*For the purpose of continual product development, KCC reserves the right to change specifications without notice. Please accept all dimensions as approximate. E&OE. © KCC Group 2020.*

## Description

Parthos Movable Wall System, Non Fire Rated, Acoustic Insulation of 37 - 58 dB Rw. Visible Vertical Seal



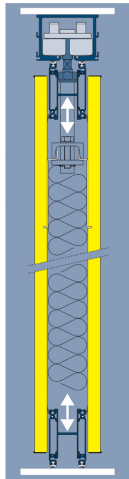
### Features

- Versatile and durable moveable wall system designed to eliminate the need for floor guides
- Non fire rated
- Excellent acoustic properties of 37 to 58 dB Rw
- Extensive design options that include curved walls and tracks, and walls that can contain single or double doors and/or glass panels
- Available in a broad range of finishes and panel inlay options
- Strong metal self supporting frame provides heights of up to 15 metres
- Pressure seals to the ceiling and floor can be deployed manually via a crank handle or electrically providing semi automatic deployment
- Multiple stacking possibilities



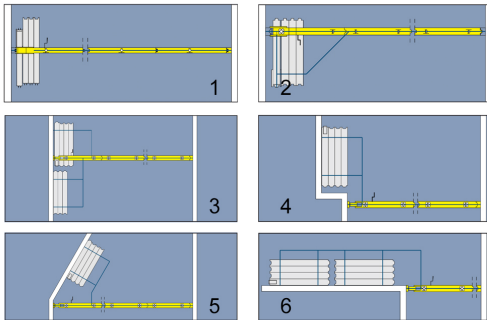
### Technical Characteristics

- Panel Thickness: 110mm
- Panel Height: 1.5-15m
- Panel Width: 600-1,240mm
- Frame Construction: Aluminium and steel
- Board Material: 14-22mm, carried by the frame construction
- Walls and Ceiling Tracks: Heavy duty, curved or straight
- Floor Track: Not required
- Carrier: Ball bearing trolleys
- Fire Safety: Non fire rated - see system 110SI EI30 & 110SI EI60
- Vertical Profiles: Anodised aluminium with magnetic strips and visible seal (for a concealed seal, see Palace 110SI)
- Pressure Sleeves: Aluminium construction, Black EPDM rubber with double sealing profiles
- Operation of Pressure Sleeves: Manual or semi-electrically powered
- Doors: Single or double door, in panel or fixed single door
- Sound Insulation: 37, 43, 45, 47, 50, 53, 57, 58 dB Rw
- Weight: 31-85kg/m<sup>2</sup> (approximate and variable against sound insulation value)



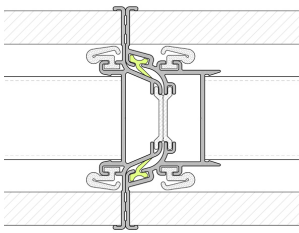
**Sectional View**

- The smooth running ball bearing track system is typically concealed in the ceiling
- The image shows the pressure sleeves at the ceiling and at the floor. Once the wall is deployed and in position, these sleeves are activated manually or electrically (semi automatic option)

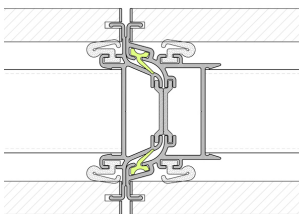


**Popular Parking Options**

- ① One point suspension
- ② One point suspension with forced guidance
- ③ ④ ⑤ ⑥ Two point suspension with cross guidance



Palace 110S



Palace 110SI

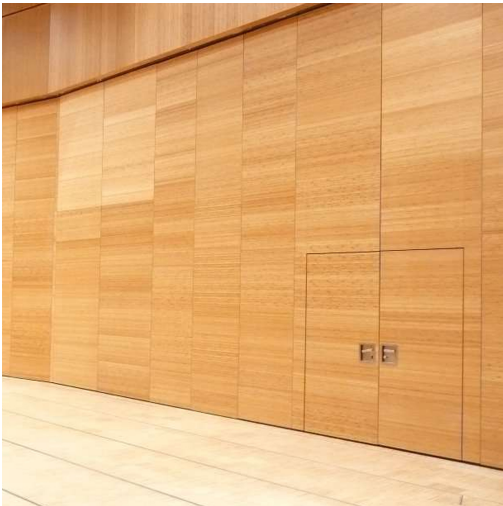
**Vertical Seal Options**

- The Palace 110S system has a visible vertical seal. This seal is concealed in the Palace 110SI system



**Design Examples**

- Palace 110



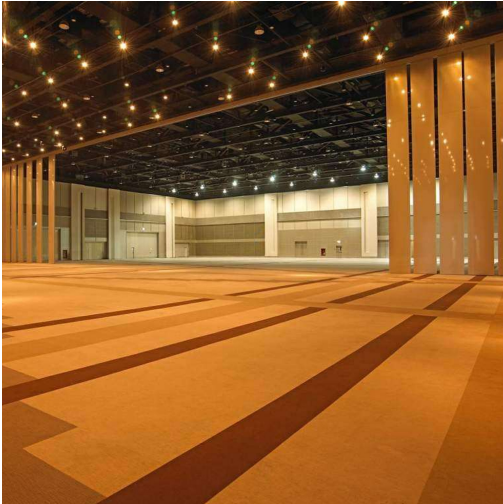
**Design Examples**

- Palace 110



**Design Examples**

- Palace 110



**Design Examples**

- Palace 110

### Description

Parthos Movable Wall System, Non Fire Rated, Acoustic Insulation of 37 - 58 dB Rw. Visible Vertical Seal



### Specification Text

#### MOVEABLE WALL SPECIFICATION

- Manufacturer: KCC Group / Parthos
- Product reference: KW-PALACE 110S/NFR
- Type: Parthos movable wall system
- Fire: Non Fire Rated
- Panel Thickness: 110mm
- Panel Height: 1.5-15m
- Panel Width: 600-1,240mm
- Frame Construction: Aluminium and steel, self supporting
- Board Material: 14-22mm [SPECIFY], carried by the frame construction
- Walls and Ceiling Tracks: Heavy duty, curved and straight
- Floor Track: Not required
- Carrier: Ball bearing trolleys
- Vertical Profiles: Anodised aluminium with magnetic strips and visible seal
- Pressure Sleeves: Aluminium construction, Black EPDM rubber with double sealing profiles
- Operation of Pressure Sleeves: Manual or semi-electrically powered [SPECIFY]
- Doors: Single or double door, in panel or fixed single door
- Sound Insulation: 37, 43, 45, 47, 50, 53, 57, 58 dB Rw [SPECIFY]
- Finish: [SPECIFY]

