



Introduction to KCC Group Business Units

1. Facades, Partitions & Doors



Combining aesthetics and functionality to create beautiful spaces

We are the chosen provider of internationally-renowned brands of high quality glazing systems including MHB, Sky-Frame, Schuco, Ottostumm and Raynaers so that we can provide our clients with a glazing solution for their project that not only offers superb functionality, but also perfectly compliments their design intent with superior aesthetics.

Our glazing consultants will advise you on the best glazing solution for your project based on your budget, the purpose and location of the glazing and other requirements such as fire-rating, dB rating, UV protection, product capabilities, overall project aesthetic or frame options, for example.

Suitable applications

- Bespoke residential properties
- High end commercial developments
- Fire and non fire-rated variations

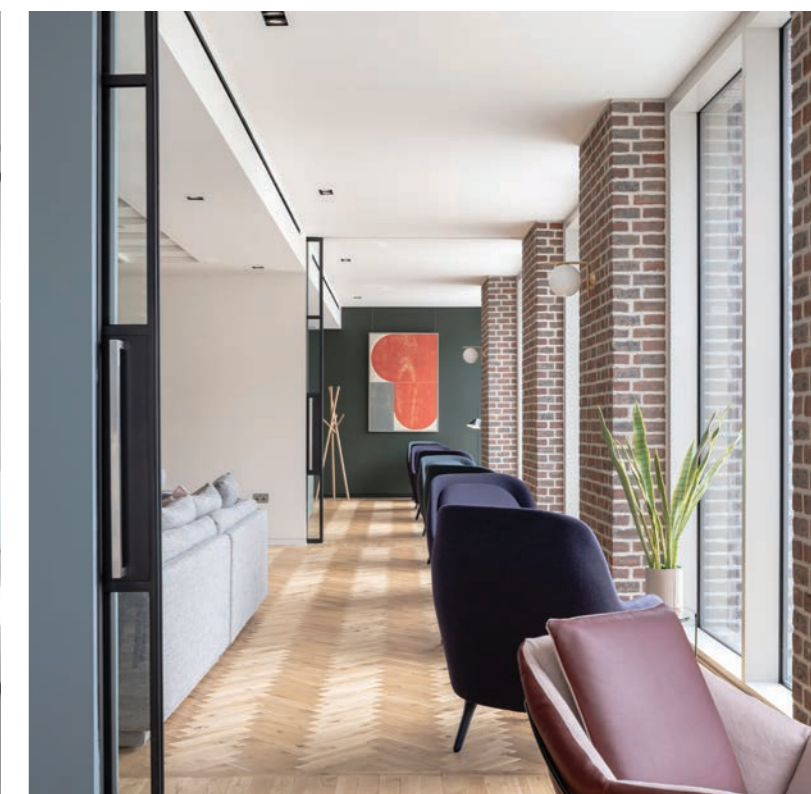
Fire-rated screens & doors

Our glazed fire screens and doors are available with integrity-only (E) or integrity & insulation (EI) fire protection ratings, depending on your specific requirements. We offer height capabilities of up to 3 metres, slim profiles, maximum glazed elements, integrated hardware and access control and manual or automatic operation, depending on the intended use. We also provide both fire and non-fire rated internal and external curtain walling systems and viewing panels.











Create flexible spaces with glazed and solid walls & partitions

We offer a range of specialist systems including glazed walls and movable partitions that help with the natural flow of light through a building and create the flexibility to make more efficient, smart use of your available space. With multiple options and finishes available, including fire and non-fire rated systems and sound insulation options, our experts work with you to plan the best solution for your project.

We work with leading manufacturers to offer systems in multiple forms with various wall thicknesses, materials, height capabilities, acoustic insulation and aesthetics, depending on your specific requirements.

Walls can be more than 15 metres in height and are designed to meet the strictest fire safety requirements.







Riser door systems

A necessity in most buildings, traditional riser doors often create an unwelcome eyesore in public areas. KCC riser door systems are elegant, frameless riser doors which allow you to create a flush seamless finish. The high performance folded steel frames with an integral perforated plasterbead allow the plaster or tape and jointing compound to be applied up to the edge concealing the door frame and all fixings. Extensive testing has been carried out to cover for all fire and acoustic needs. As such, this range of concealed riser doors is the most extensive and versatile range on the market to date.

Key features

- Aesthetically clean and discreet
- Concealed frame
- Concealed hinge
- Remarkably quick and simple to install
- Fire tested up to 2 hours
- Acoustically and air leakage tested
- Textured or primed finish to allow same finish as walls



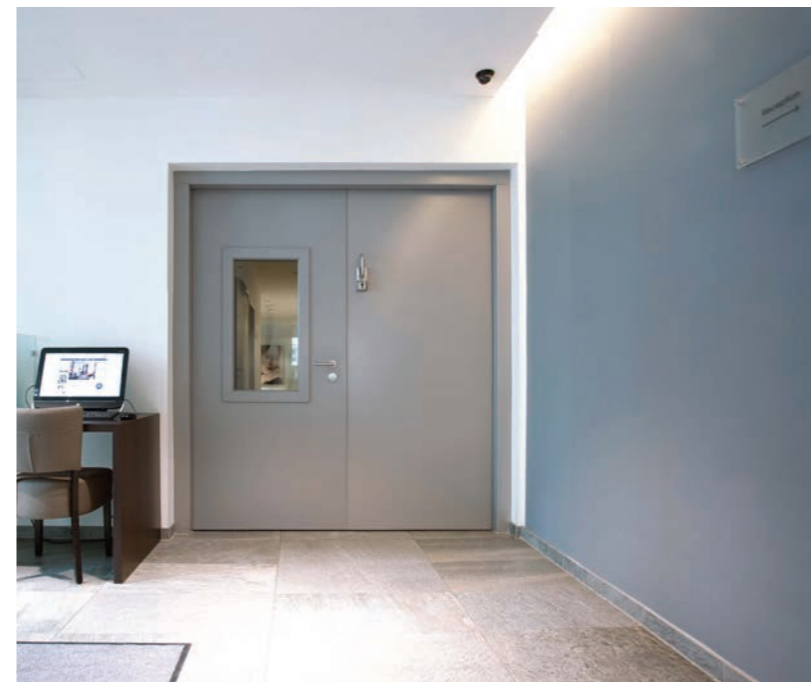


Steel doorsets

Specialist steel doorsets provide a reliable, durable, long-lasting solution that help to protect building occupants from security or fire risks. Our internal and external steel doorsets allow you to combine form and function with options to suit all budget, aesthetic and performance requirements.

Manufactured by experts at our fabrication facility in Dublin, our doors are commonly used in the pharmaceutical, healthcare, datacentre, manufacturing, transport, education, housing, commercial and utilities sectors, for both new builds and refurbishment projects.

Our doorsets come complete with integrated door hardware, electronic locking or access control as required, a key benefit of working with KCC Group as a single source provider. The doors are expertly manufactured to meet your specifications at our fabrication facility.





High performance timber doorsets

The coming together of KCC and Elite Doors greatly enhances our capability to offer clients fully integrated doors and ironmongery from a single source. Our doorsets are manufactured to the highest fire door standards, compliant to BS476 Part 22 for fire, with FSC® full chain of custody.

Elite Doors are part of KCC Group and are renowned for manufacturing high performance timber fire doors for the commercial, health, education and local government sectors. The company has developed a strong brand over the past 25 years and is widely known for excellent quality, great service and after care.

Key features

- Fully bespoke service, manufactured locally to exact specification
- Variety of finishes including veneer, PVC-u, Laminate, Paint, Primed for on-site painting
- Glazed Panels and adjoining glazed screens
- Performance characteristics include fire-resistance, acoustic insulation, radiation shielding, anti-microbial protection, door & user protection, privacy, durability and strength



1. Facades, Partitions & Doors

Project references

Project Spotlight: Nearing completion

ESB Headquarters, Dublin

We are nearing completion on the prestigious “Project Fitzwilliam” with Grafton Architects, O’Mahony Pike Architects and PJ Hegarty, a 45,000sqm development which involves the restoration and redevelopment of the existing ESB buildings on Fitzwilliam Street, Dublin. The project encompasses the retention and refurbishment of a number of protected Georgian structures and the construction of a new seven-storey office block.

The specification for the Fitzwilliam Street façade was extremely detailed and the design, development and approval process between the design team and KCC took approximately two years and included numerous collaborative workshops between all key stakeholders.

In collaboration with the design team from Grafton Architects, we designed and developed a proposal for a completely bespoke, thermally-broken MHB steel window system with our partners in Holland. Given the importance and high specification of the bespoke façade system, there was a requirement to design and fabricate full-size prototype units which were then tested rigorously by approved testing bodies in Holland for thermal modelling, acoustic testing, wind/pressure and water testing.

The initial concept had to be developed into a full prototype window for inspection, testing and approval. As these units were entirely bespoke and purpose-built for this project, extensive testing was undertaken at various test facilities in Europe to ensure that the high specification outlined by the client to provide a slim profile, thermally-broken window system

capable of achieving up to 4 metres in height, was being met for the façade of the building, the desired objective being to reinstate the Georgian aesthetic of the building in sympathy with the surrounding, historical streetscape. We subsequently built two full-size prototypes in Kill, Co Kildare in a mock-up version of what the end result would look like in situ on Fitzwilliam Street, where the design team were not only able to view and inspect the proposed windows in-situ but also surrounded by the various types of brick & brick coursing proposed for the project in accordance with the aesthetic requirements of the Georgian streetscape.

Additionally we were commissioned to design, fabricate and install internal Schuco Jansen doors and fire-rated screens on the new office space of the project.

We have also designed internal steel fire-rated and non fire-rated doors and screens in MHB slim profiles to be installed internally on 5 luxury apartments, restored to their original Georgian splendour, working closely with Shaffrey Architects.

We have also designed and developed bespoke oversized external glazed steel-framed doors to compliment the various glazing elements on the project – these doors provide access control and automated features to ensure ease of access for users of all abilities whilst serving as fire-escape doors in some applications.





Project reference: Nearing completion

Horgans Quay, Cork

No.1 Horgan's Quay is one of KCC Group's largest recent Munster projects and one of Ireland's most significant and exciting urban developments. Sustainability and energy management were key in the design of this impressive office building by OMP Architects and BAM Construction. The modern design achieves an A2 energy rating and the façade features floor to ceiling glazing and deep overhangs to allow maximum daylight to travel through the building whilst still minimising unwanted solar gain.

We worked closely with the design team on this project to create, supply and install specialist glazed fire screens and doors for this project, to continue the theme of glazed expanses throughout the interior of the building. The specification included 14no. Janisol C4 doors, Jansen VISS screens, and a combination of Jansen Economy 60 and Economy 50 doors and screens.

We also provided a series of Janisol non-rebated fire doors and riser doors for the lobby areas of seven of the eight floors of the building. As part of the buildings automation strategy we also installed and commissioned Dorma ED250 operators on the Janisol Doors for ease of use in line with Part M of the building regulations. There were also 7 internal glazed Janisol screens, one of which was fire-rated, using Pyrogard glass for the fire-rated screens and Careys glass for the non-fire rated screens.

Featured products

- Fire-rated screens & doors
- Steel glazing
- Door Automation

Project reference: Nearing completion

15 Barrow Street, Dublin

We worked closely with architects Henry J Lyons and main contractor John Sisk & Sons on this prestigious development for client Jones Investments in Dublin 2. The project named "The Bottleworks" is a superbly designed open plan work space developed to the highest standards with a vision for the future of work central to its inspiration

The design team at Henry J Lyons specified MHB for this small-scale, high spec project because of its ultra slim profiles and modern, yet industrial aesthetic. The project required a combination of fire-resistant and non fire-resistant glazed screens and doors across the main entries and lobbies of the building.

MHB is renowned for having the worlds slimmest steel profiles in fire-rated steel systems, allowing users to meet functional requirements without compromising on aesthetics or design. We utilised the SL30 system to achieve EI30 and EI60 fire resistance. The glazed wall separating the main entrance area from the in-house canteen features reeded glass as a design feature, a semi-obscure glass effect allowing for privacy and creating a division between the two areas while still facilitating maximum light transmission throughout the building.

Featured products

- MHB steel glazed windows & doors - fire and non fire rated





Project reference: Nearing completion

Private dwelling, Northern Ireland

We were specified by the client's architect and contractor for this stunning residential project located in a beautiful woodland area in County Down, Northern Ireland. The project comprised of an elegant and spacious private pool house on the client's private estate. We worked closely with the design team to design and create a striking 25 metre wide expanse of glass using the Sky-Frame system, with panes reaching an impressive 4 metres in height. The system is divided into 16 individual panels, 6 of which are sliding and 10 fixed, creating a seemingly invisible, harmonious transition between the pool house interior and the outdoors once the panels are open. With the size of the opening sections these doors were automated for push button operation when opening and closing. The project design maximizes the amount of natural light coming into the impressive space and allows the clients to make the most of the view.

Featured products

- Sky-Frame
- Door Automation



**Our purpose is to help
make buildings work**

Why Us?



The knowledge and the products to support your innovation.

Access 30 years of expertise and a comprehensive range of product, including multiple high-specification, unique product ranges.



The expertise and technology to provide a complete specification, drawing and compliant solution.

Every detail, every document, fully managed, for every opening. Helping to deliver the optimal solution, making your job easier and keeping everyone on the same page.



The scale to deliver and support quality, best-fit, large scale solutions, at very competitive prices.

Our own 2,000 square metre manufacturing facility in Dublin and our own expert installation team.



The capability and commitment to deliver on time, install without hassle and ensure everything works exactly as intended.

A dedicated, highly trained and expert team, ready to deliver.



The team to ensure all stays working as intended.

We install, service, repair and maintain all types of automatic and manual door solutions, including industrial doors, fire doors, roller doors, security locks, partitions, sliders and entrances. With 24-hour call out, 365-days of the year.

Dublin | Cork | Belfast | Dubai

W. thebccgroup.com

E. solutions@thebccgroup.com

KCC
GROUP