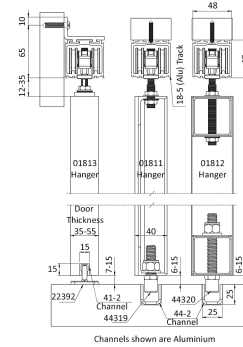


Description

Coburn Straightaway sliding door system for doors up to 180kg per leaf



Technical Features

Function & Operation The Straightaway 180 is a sophisticated and versatile top hung system designed for medium to heavy duty sliding doors up to 180kg. The system can easily accommodate sliding doors in a variety of architectural openings and is supplied with four wheeled hangers incorporating nylon coated wheels and precision ball bearings

Summary of Features See extended features

Options Other systems available to suit other doors sizes and weights. See extended features for further options

Dimensions

Dimensions See extended features

Finishes

Finishes Available n/a

Certification

European Norm No Harmonised European Norm

Product Classification n/a (No Harmonised European Norm)

EC Certificate of Conformity No. n/a (No Harmonised European Norm)

Certifire No. n/a (No Harmonised European Norm)

Declaration of Performance n/a (No Harmonised European Norm)

Other Test Evidence n/a

BIM Assist™

BC(A)R Assist™*

Guarantee

1 Year

Last Reviewed 09/02/2018

* ROI Only

For the purpose of continual product development, KCC reserves the right to change specifications without notice. Please accept all dimensions as approximate. E&OE. © KCC Group 2020.

Description

Coburn Straightaway sliding door system for doors up to 180kg per leaf



Features

- Top hung sliding system for timber or metal doors up to 180kg
- Suitable for use both internally and externally
- Smooth and quiet operation provided by anodised aluminium track and nylon wheeled hangers
- Tracks can be mounted directly to the soffit or wall mounted using brackets
- Track is self-cleaning due to the angled nylon wheels on the door hanger
- Hangers have vertical adjustment to ensure a perfect fit
- Range of bottom guiding options available to achieve a clear threshold
- Track concealed soft closing option
- Microline option is designed to enable timber sliding doors to be adjusted to increase or decrease the clearance between the track and top of the door leaves to as little as 2mm
- Telescopic opening options for 2 doors and 3 doors available
- Any number of doors can be used on single or multiple lines of track to cover the width of the opening



Technical Characteristics

- Maximum door weight: 180kg
- Maximum door height: 3500mm
- Door Thickness: 35 – 55mm
- Track Dimensions: W48mm x H47mm



01811

01812

Hanger

Select the hanger

- 01811: 180 hanger for metal doors (pair)
- 01812: 180 hanger for box frame metal doors (pair)
- 01813: 180 hanger with concealed apron plate for timber doors (pair)



01813

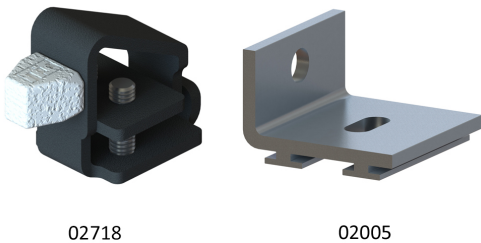
For the purpose of continual product development, KCC reserves the right to change specifications without notice. Please accept all dimensions as approximate. E&OE. © KCC Group 2020.



Guides

Select your floor guide arrangement

- 22392: Floor guide, plastic, (timber doors)
- 44319: Floor guide, pair, (metal doors)
- 44320: Extended floor guide (metal box frame doors)
- 44347: Concealed floor guide (timber doors)



Fixings & Track Stop

Select from the following

- 02718: Track stop, (pair)
- 02005: Face fixed bracket set (5 pcs)

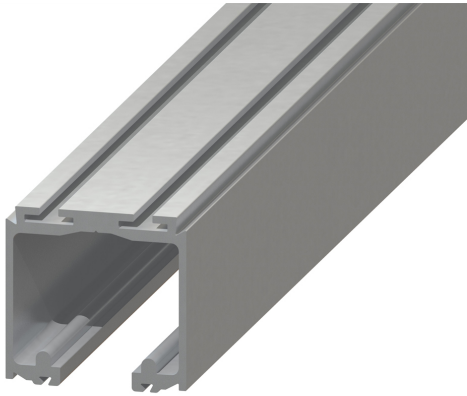


Soft Closer and Microline

- 30638: Soft closer 180kg (concealed in track)
- 97741: The Microline installation kit is designed to enable timber sliding doors to be adjusted to increase or decrease the clearance between the track and top of the door leaves to as little as 2mm
 - Maximum Door Weight: 250kg
 - Maximum Door Height: 4000mm
 - Door Thickness: 30 – 50mm

97741



**Track**

Select the track

- 18024: Anodized Aluminium, 2400mm
- 18030: Anodized Aluminium, 3000mm
- 18036: Anodized Aluminium, 3600mm
- 18040: Anodized Aluminium, 4000mm
- 18060: Anodized Aluminium, 6000mm
- 25924: Anodized Aluminium, 2400mm, used with 30638 soft closer
- 25930: Anodized Aluminium, 3000mm, used with 30638 soft closer
- 25936: Anodized Aluminium, 3600mm, used with 30638 soft closer
- 25940: Anodized Aluminium, 4000mm, used with 30638 soft closer
- 25960: Anodized Aluminium, 6000mm, used with 30638 soft closer

**Bottom Channel**

Select a bottom channel

- 41224: Anodised Aluminium, suites 22392 guide, 2400mm
- 41230: Anodised Aluminium, suites 22392 guide, 3000mm
- 41236: Anodised Aluminium, suites 22392 guide, 3600mm
- 41260: Anodised Aluminium, suites 22392 guide, 6000mm
- 44224: Anodised Aluminium, suites 44319, 44320 or 44347 guide, 2400mm
- 44230: Anodised Aluminium, suites 44319, 44320 or 44347 guide, 3000mm
- 44236: Anodised Aluminium, suites 44319, 44320 or 44347 guide, 3600mm
- 44260: Anodised Aluminium, suites 44319, 44320 or 44347 guide, 6000mm
- 44424: Stainless Steel, suites 44347 guide, 2400mm
- 44430: Stainless Steel, suites 44347 guide, 3000mm
- 44436: Stainless Steel, suites 44347 guide, 3600mm
- 44460: Stainless Steel, suites 44347 guide, 6000mm

Description

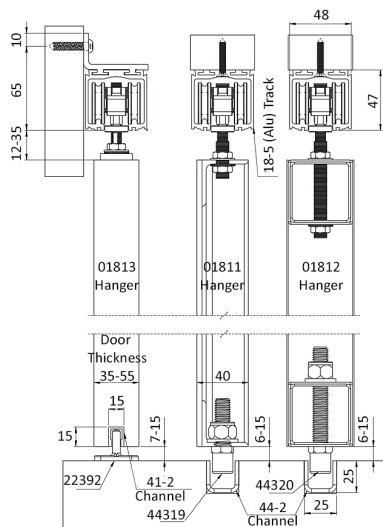
Coburn Straightaway sliding door system for doors up to 180kg per leaf



Specification Text

GENERAL HARDWARE

- Manufacturer: Coburn
- Product reference: [ITEMS AS SCHEDULE]
- Type: Straightaway 180 Sliding Door System
- Size: See drawings
- Material/ finish: n/a



Channels shown are Aluminium

For the purpose of continual product development, KCC reserves the right to change specifications without notice. Please accept all dimensions as approximate. E&OE. © KCC Group 2020.