

SL30-IS0®

Slim-framed insulated steel profile system for doors, windows and facades



MORE LIGHT!
ON THE EDGE



Steel windows, doors and facades since 1938

ON THE EDGE GE DESIGN

Perfection



MHB, a “Design & Build” façade company, was formally established in 1938 with roots dating back to the 1600s. We develop and produce high quality steel facades, doors and windows and our products are installed worldwide through successful collaboration with carefully selected international partners.

With more than 75 years of experience in façade engineering, we place a strong emphasis on innovative and aesthetic solutions. The result is a range of products that combine superior technical characteristics with outstanding elegance.

We enjoy creating the right solutions for our customers.

“SL30-ISO® systems combine superior technical characteristics with outstanding elegance.”

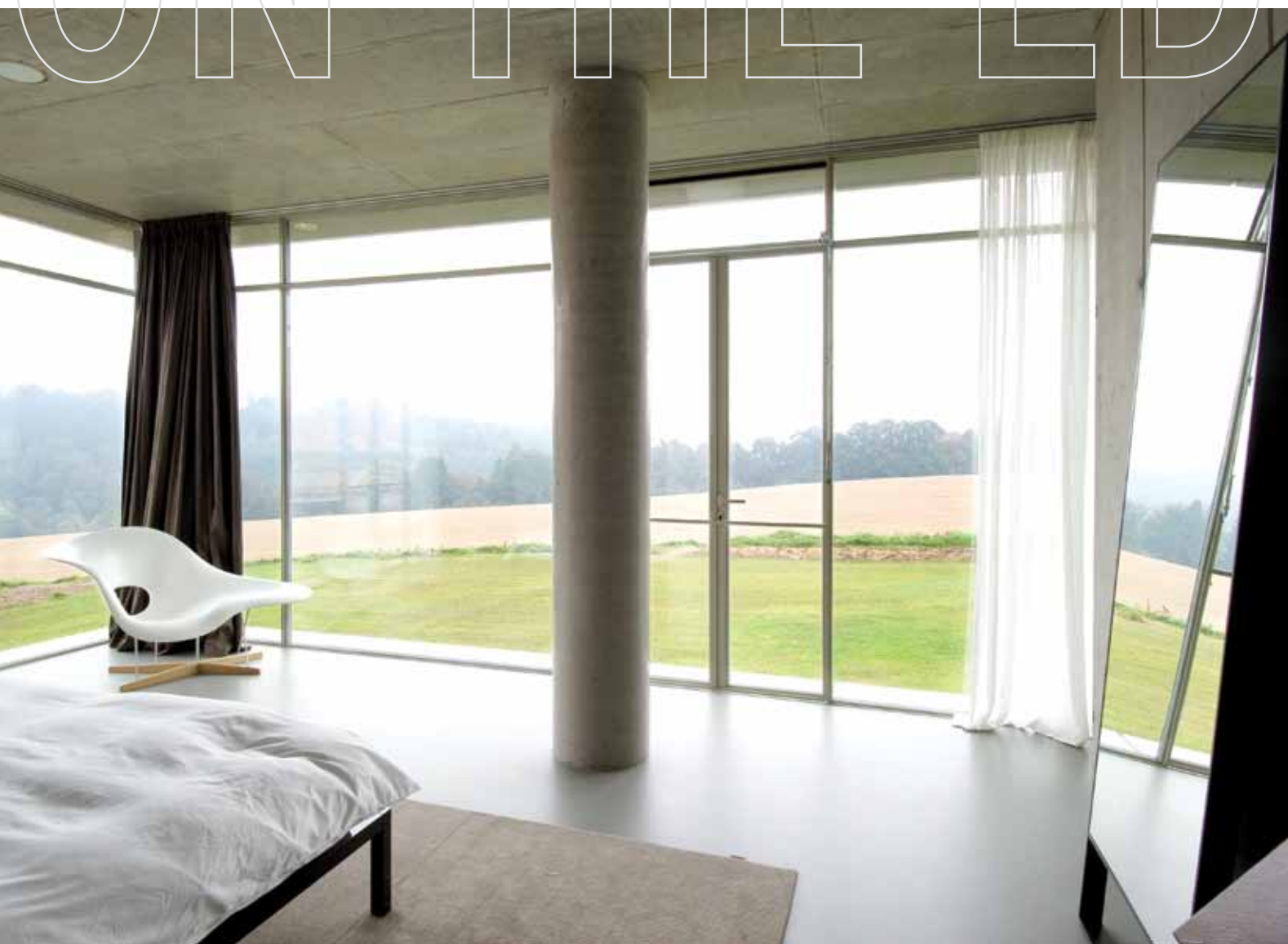
Pure light



Villa Humpolec, Tschechische Republik
Küche

ON THE EDGE DESIGN

Minimal steel



The MHB sharp-edged steel profiles allow us to create ultra-slim façades, windows and doors. The combination of the inherent strength of steel with smart design gives architects the freedom to play with large glazing areas.

The very slim sightline of the SL30-ISO® profile integrates perfectly into the outlines of a building. Being almost invisible, it allows huge amounts of light to flood in.

| Connecting the inside and outside world.

Villa Humpolec, Czech Republic
Bedroom

Pure design



Villa Humpolec, Czech Republic
Back entrance





Bauhaus Dessau, Germany
North façade



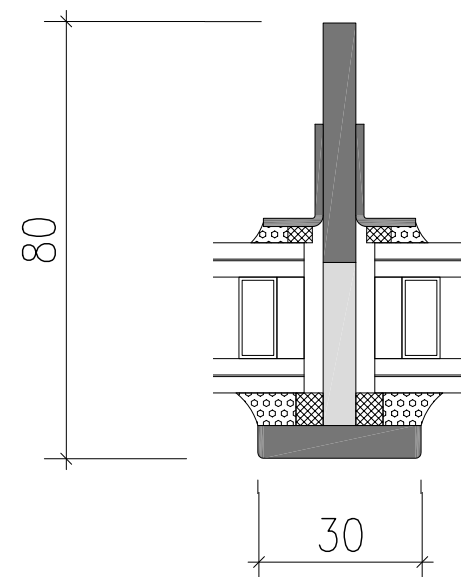
Bauhaus Dessau, Germany

Bauhaus building listed on the UNESCO world heritage list.

MHB stands for "More Light". Beautiful steel windows and façades allowing more light to come through. This project fits in perfectly with our passion for the purity and elegance of steel. The Bauhaus Dessau Foundation and Brenne Architects entrusted us with the development of new façades combining the preservation of the authentic design with state-of-the-art window technology.

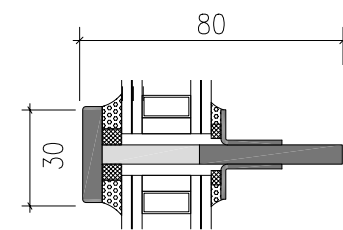
ON THE EDGE DESIGN

Innovation



The SL30-ISO® profile is one of MHB'S most valued innovations. It makes use of the specific qualities of steel to create a very slim, strong and durable profile that is perfectly wind and watertight and has insulation values few others are able to match.

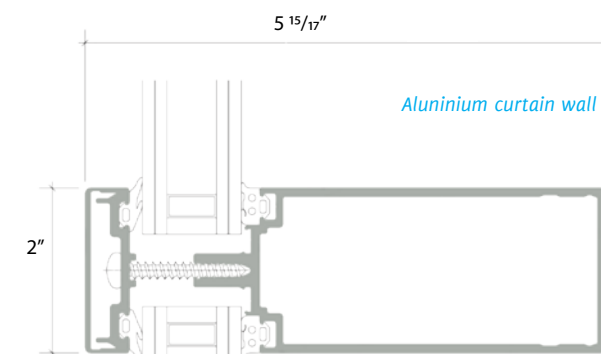
With a sightline of 30 mm (1 5/16") it makes it the slimmest steel profile system on the market today.



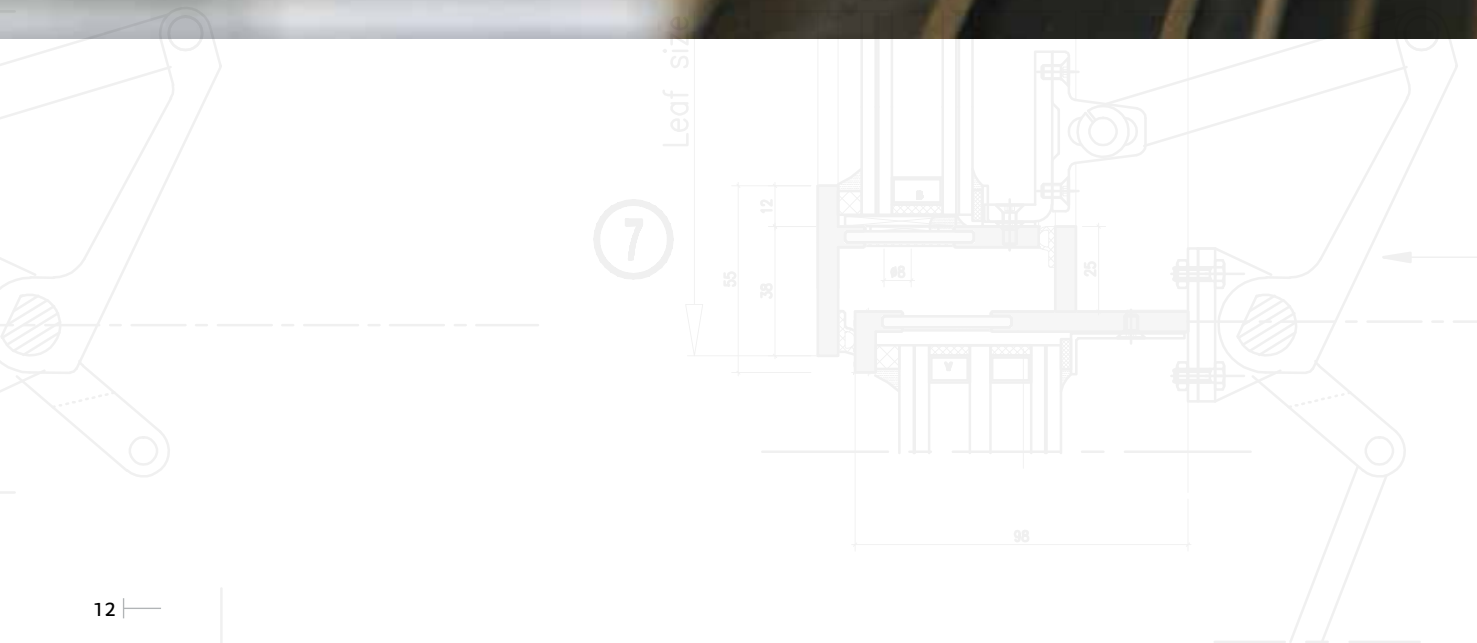
SL30-ISO® profile:

Facades designed with SL30-ISO® benefit from a substantially finer, shorter and stronger profile than aluminium systems.

Because of these exceptional structural aspects of the MHB steel profiles, we are able to create bigger and higher frames for larger glass panes allowing more light to penetrate without any obstruction of the view.

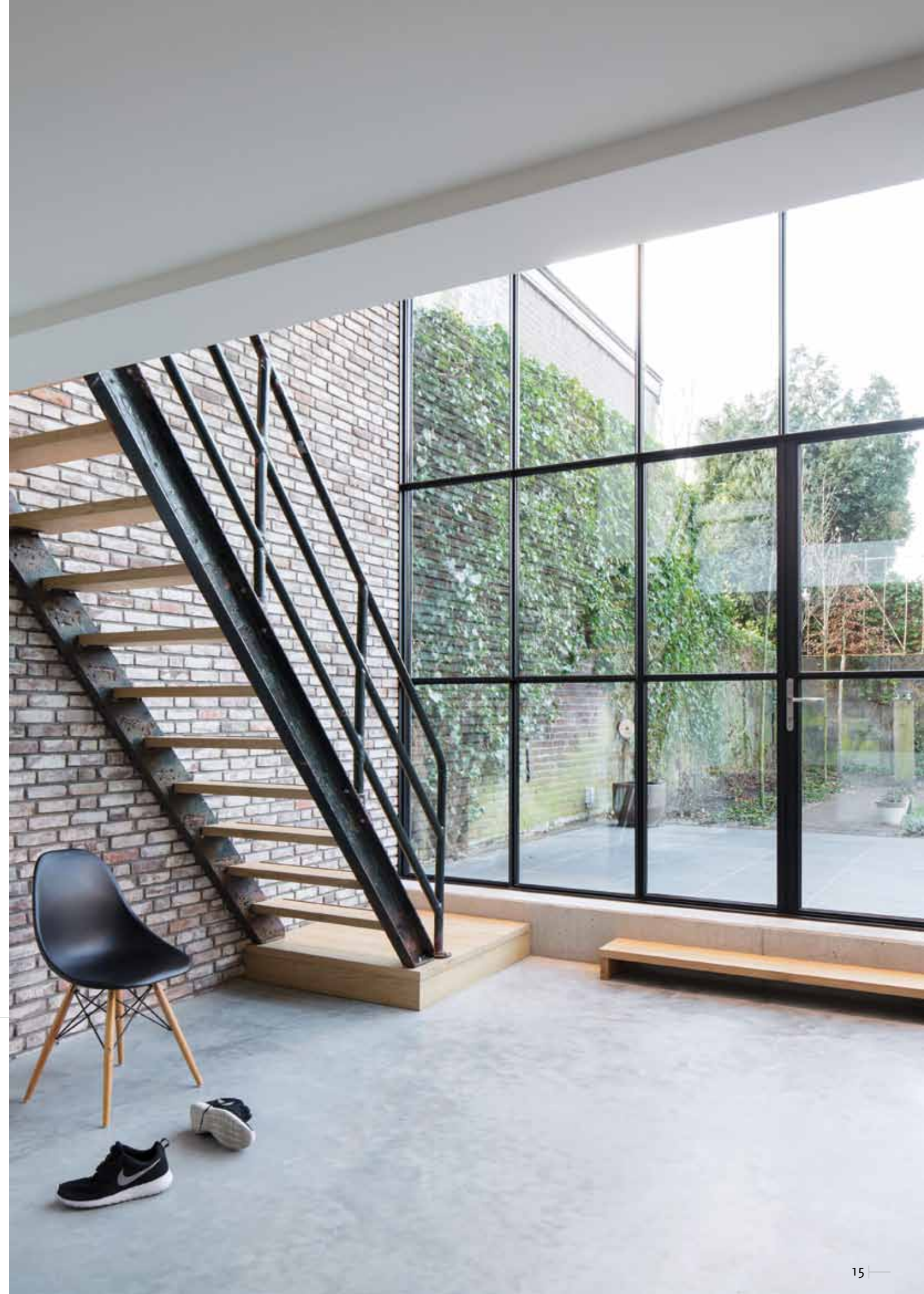


Aluminium curtain wall profile





Private house Vught , The Netherlands
Living area



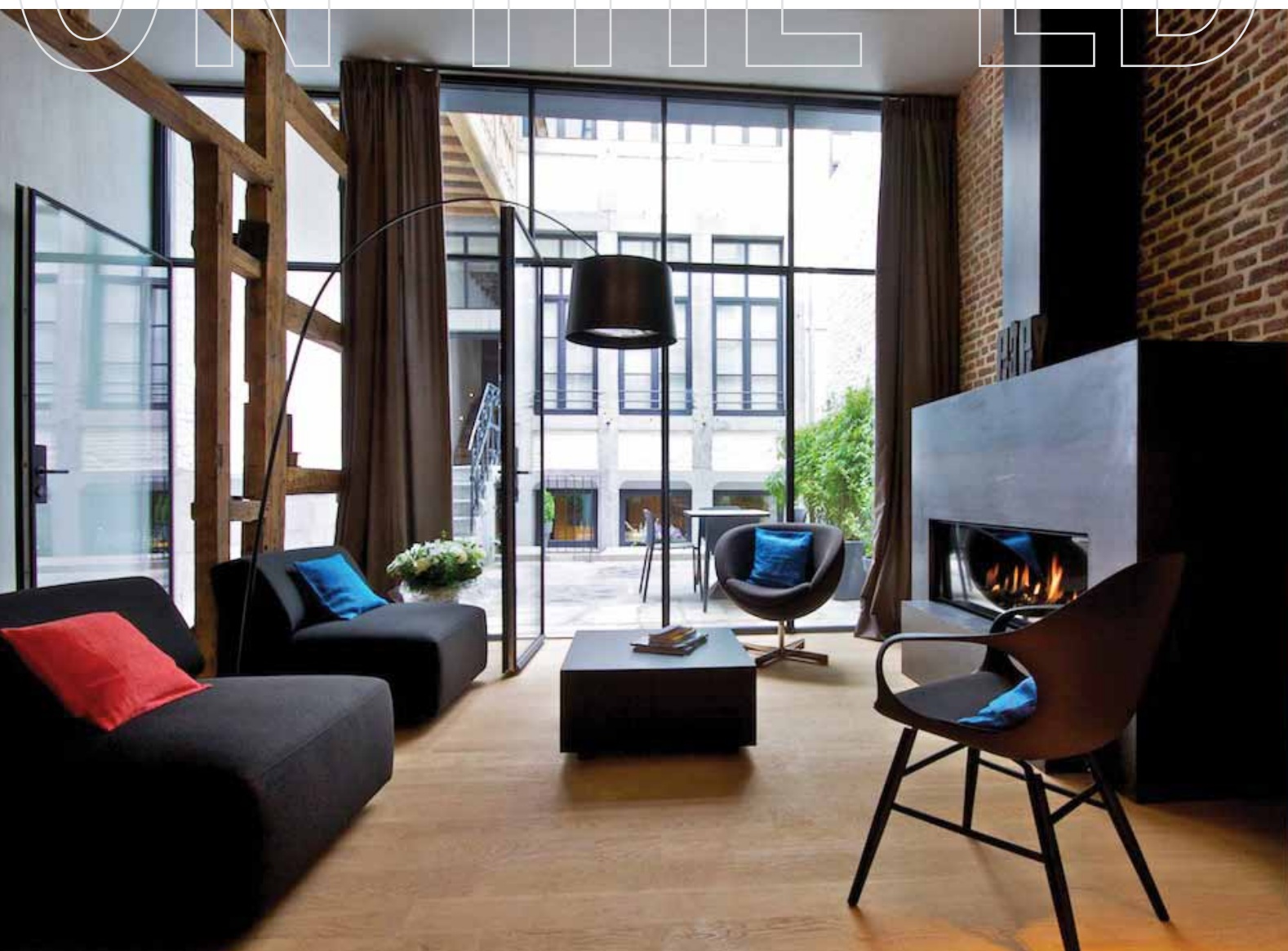
Pure delight



Villa Lieshout, The Netherlands
Wellness area

ON THE EDGE DESIGN

Comfort



Hotel Neuvise, Belgium
Hotel room

Thermal insulation

The core feature of the SL30-ISO® window is the thermally broken steel profile. With the integrated fiber glass reinforced insulator, SL30-ISO® provides high thermal efficiency with maximum U-values of up to 0.7 W/m²K, enabling the design of highly energy-efficient buildings.

Wind and water tightness

Thanks to the fully integrated water drainage system and superior sealing components, we can create a perfect wind and water tightness without any visible openings or rain caps.



Villa Bos en Duin, The Netherlands
Back garden



Villa Bussum, The Netherlands
Main entrance





www.mhb.eu



Steel windows, doors and facades since 1938

MHB bv

Onderstalstraat 3 ■ 6674 ME Herveld ■ The Netherlands
Tel. +31 488 45 19 51 ■ E-mail: info@mhb.eu

lfengv1 - 2014-10-21 | ©MHB 2014